



From 1847  
**Benicia General Plan**  
Into the 21st Century

The official copy of the General Plan Land Use Diagram is kept at the City of Benicia Planning Department and is available for public viewing during regular business hours.

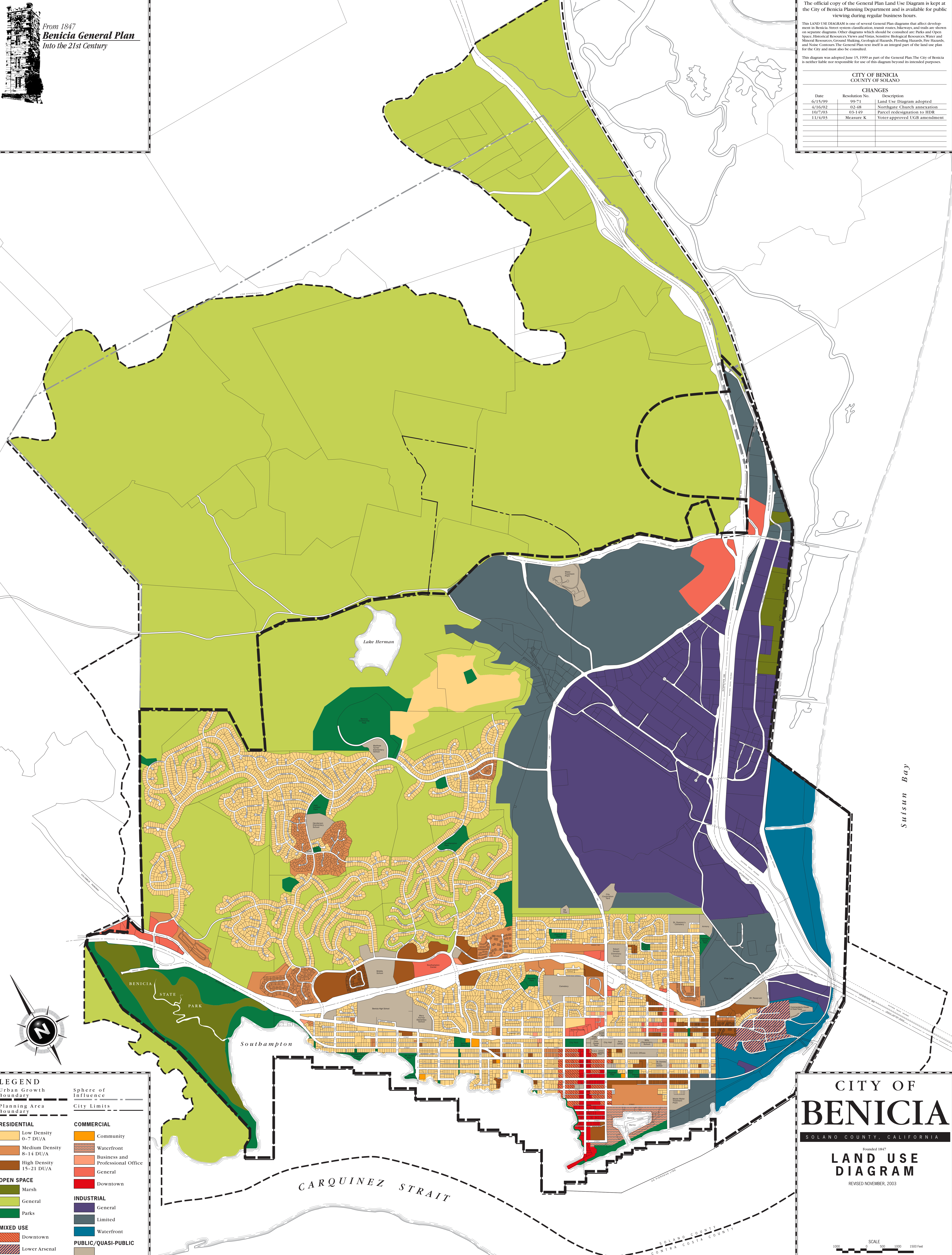
This LAND USE DIAGRAM is one of several General Plan diagrams that affect development in Benicia. Street system classification, transit routes, bikeways, and trails are shown on separate diagrams. Other diagrams which should be consulted are: Parks and Open Space, Historical Resources, Views and Vistas, Sensitive Biological Resources, Water and Mineral Resources, Ground Shaking, Geological Hazards, Flooding Hazards, Fire Hazards, and Noise Contours. The General Plan text itself is an integral part of the land use plan for the City and must also be consulted.

This diagram was adopted June 15, 1999 as part of the General Plan. The City of Benicia is neither liable nor responsible for use of this diagram beyond its intended purposes.

**CITY OF BENICIA**  
COUNTY OF SOLANO

**CHANGES**

| Date    | Resolution No. | Description                  |
|---------|----------------|------------------------------|
| 6/15/99 | 99-71          | Land Use Diagram adopted     |
| 4/16/02 | 02-48          | Northgate Church annexation  |
| 10/7/03 | 03-149         | Parcel redesignation to HDR  |
| 11/4/03 | Measure K      | Voter-approved UGB amendment |



**LEGEND**

Urban Growth Boundary  
Planning Area Boundary

**RESIDENTIAL**

- Low Density 0-7 DU/A
- Medium Density 8-14 DU/A
- High Density 15-21 DU/A

**OPEN SPACE**

- Marsh
- General
- Parks

**MIXED USE**

- Downtown
- Lower Arsenal

**COMMERCIAL**

- Community
- Waterfront
- Business and Professional Office
- General
- Downtown

**INDUSTRIAL**

- General
- Limited
- Waterfront

**PUBLIC/QUASI-PUBLIC**

- General

**Sphere of Influence**

- City Limits

**CITY OF BENICIA**  
SOLANO COUNTY, CALIFORNIA

Founded 1847  
**LAND USE DIAGRAM**  
REVISED NOVEMBER, 2003

SCALE  
0 500 1000 1500 Feet

Suisun Bay

CARQUINEZ STRAIT

SOLANO COUNTY  
CONTRA COSTA COUNTY